

Stainless Toilet Pan Wall Faced, Type 2

Toilets made in Australia from stainless steel by Stoddart Manufacturing have the best water efficient dual flush rating (certified by WELS for 4.5 litre full flush and 3 litre half flush).

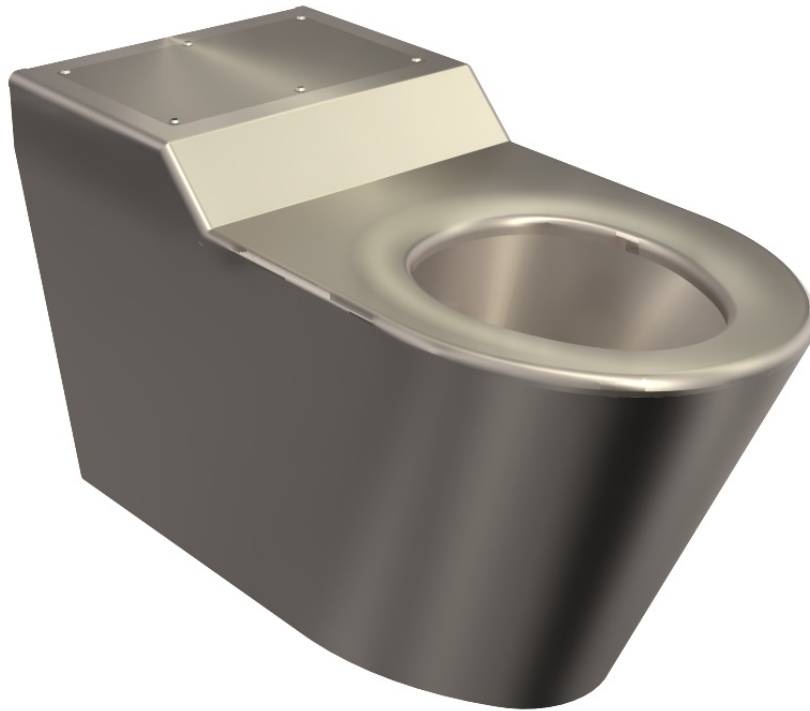
The Stoddart Toilet reduces maintenance costs, water usage costs and is the right choice for use in all Australian high security prisons, detention centres, police stations, hospitals and public amenities.

Vandal resistant, fully welded stainless steel construction provides superior strength, superior hygiene and long service life.

The toilet seat is hydraulically formed to create a safe, strong, comfortable contoured and self draining profile.

The Heavy Duty, Rear Access option is preferred for high security prisons.

The Standard option has a secured full top access cover (shown) for police stations and public amenities. Flush fitted access panels are optional.



Models:

SPPL.TP.WF2.xx

Code Breakdown;

SPPL

Standard Product Plumbing

TP.WF2

Toilet Pan - Wall Faced Type 2

xx

Blank - Standard specification
D - Disabled height
HD - Heavy Duty specification
RA - Rear Access only
TA - Top Access panel
SA - Side Access panel

Examples;

SPPL.TP.WF2
SPPL.TP.WF2.D
SPPL.TP.WF2.HD
SPPL.TP.WF2.HD.D
SPPL.TP.WF2.RA
SPPL.TP.WF2.RA.D
SPPL.TP.WF2.RA.HD.D



Rating achieved with
Sanitron Dual Flush
Electronic Valve



Features and Benefits:

- Standard unit has 1.6mm thick stainless steel shroud and seat for superior hygiene & strength.
- Optional heavy duty (HD) specification has 3mm toilet seat and 2mm body.
- Plumbing & fixing points are concealed for security and vandal resistance.
- Access to plumbing can be either via a large top access panel (shown), a side assess panel or through a rear service duct.
- Toilet Pan Seat has an anti-contraband flushing rim for effective cell inspection.
- Smooth hydraulically formed seat has radius to both outer and inner edges for safety and comfort and has a self draining seat surface for improved hygiene.
- All external corners are rounded with a smooth radius for user safety.
- These toilets can be installed with either a flush valve or a cistern (order separately).

Due to continuous product research and development, the information contained herein is subject to change without notification.

Stainless Toilet Pan Wall Faced, Type 2

Specifications:

Construction:

Standard Specification

Toilet bowl – Highly polished 304 stainless steel
Toilet Seat - 1.6mm 304 stainless steel, No 4 finish
Body & Pan shroud - 1.6mm stainless steel, No 4

Optional Heavy Duty Specification

Toilet bowl – Highly polished 304 stainless steel
Toilet Seat - 3.0mm 304 stainless steel, No 4 finish
Body and Pan shroud - 2.0mm stainless steel, No 4
Watermarked and WELS approved 4.5 litre full flush / 3 litre half flush.

Flushing:

Ordered separately.

- Electronic Flush valve requires 20mm mains connection, water pressure regulated between 250kpa and 500kpa and a flow rate between 1.2 and 1.5 litres per second at the valve face. The 'RAG' must be mounted >300mm above seat.
- B) Cistern Installation should be minimum 1150mm to top of cistern

Pan Inlet

60mm i.d. stainless steel inlet.

Connection:

Supplied with key-seal connector for 40mm PVC feed pipe from Cistern or RAG.

Pan Outlet

Connection:

P trap is standard. (Optional p-S adaptor can be ordered separately).
95mm o.d. diameter stainless steel spigot with rubber coupling included to suit 100mm PVC or copper sewer pipe.

Unit Fixing:

The unit is designed to be fixed to the rear wall with 4 M10 bolts. For additional security a Z-clip can be used to secure the front of the base to the floor.

Models:

SPPL.TP.WF2.xx

Code Breakdown:

SPPL

Standard Product Plumbing

TP.WF2

Toilet Pan - Wall Faced Type 2

xx

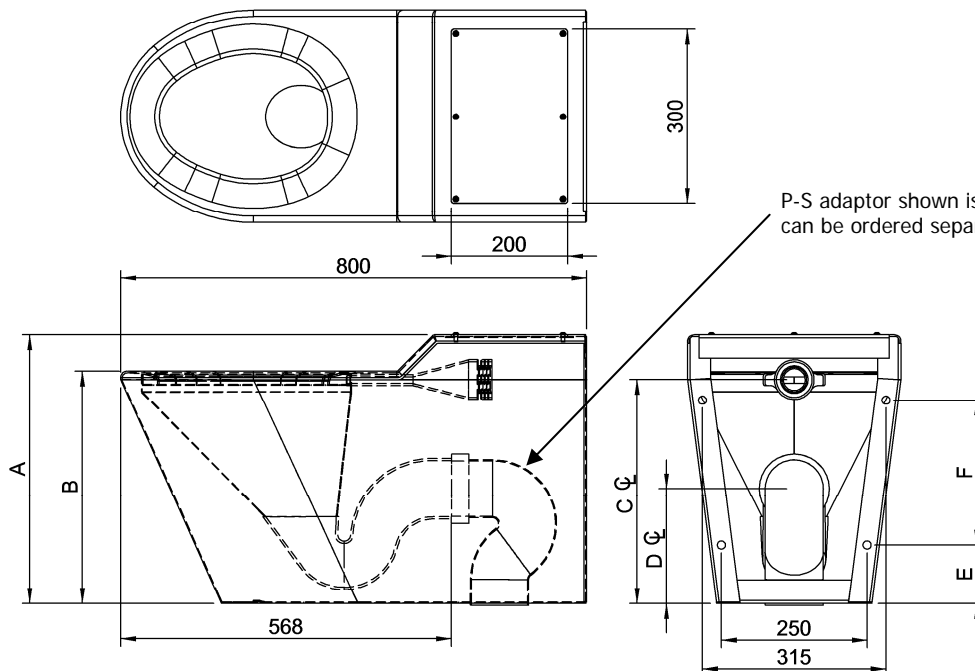
Blank - Standard specification
D - Disabled height
HD - Heavy Duty specification
RA - Rear Access only
TA - Top Access panel
SA - Side Access panel

Examples:

SPPL.TP.WF2
SPPL.TP.WF2.D
SPPL.TP.WF2.HD
SPPL.TP.WF2.HD.D
SPPL.TP.WF2.RA
SPPL.TP.WF2.RA.D
SPPL.TP.WF2.RA.HD.D

Note: Rear Access units are designed for use with a service duct. The P trap and flush pipe are accessed through the service duct. The unit has overall length reduced to 600mm.

Model No.	Dim A	Dim B	Dim C	Dim D	Dim E	Dim F
TP.WF2	462	400	412	202	100*	250*
TP.WF2.D	532	470	482	272	117.5*	318*



**Standard Model : Top Access as illustrated
SPPL.TP.WF2 & SPPL.TP.WF2.D**

Due to continuous product research and development, the information contained herein is subject to change without notification.