

Stainless Toilet Pan - Wall Faced

Toilet Pan unit for high security prisons and detention centres.

Fully welded seamless stainless steel construction for superior strength and hygiene.

The toilet seat is hydraulically formed to create a safe, strong, comfortable contoured and self draining profile.

The Heavy Duty, Rear Access only option is preferred for high security prisons. The Standard option has a secured full top access cover (shown) for police stations and public amenities. Flush fitted access panels are optional.

Models:

SPPL.TP.WF.x

Code Breakdown;

SPPL

Standard Product Plumbing

TP.WF

Toilet Pan - Wall Faced

x

Blank - Standard specification
HD - Heavy Duty specification
RA - Rear Access only
TA - Top Access panel
D - Disabled height

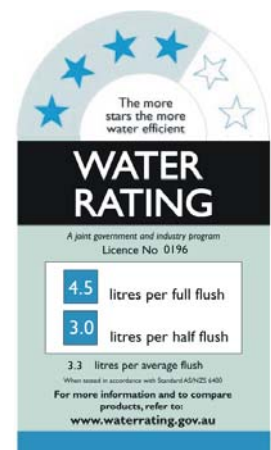
Examples;

SPPL.TP.WF
SPPL.TP.WF.D
SPPL.TP.WF.HD
SPPL.TP.WF.HD.D
SPPL.TP.WF.RA
SPPL.TP.WF.RA.D
SPPL.TP.WF.HD.RA



Features and Benefits:

- Standard unit has 1.6mm thick stainless steel shroud and seat for superior hygiene & strength.
- Optional heavy duty (HD) specification has 3mm toilet seat and 2mm body.
- Plumbing & fixing points are concealed for security and vandal resistance.
- Access to plumbing can be either through Rear Service duct, large top access panel (shown) or by a flush inset access panel mounted in top or side face (see drawing over).
- Toilet Pan Seat has a anti-contraband flushing rim for effective cell inspection.
- Smooth profiled seat has radius to both outer and inner edges for safety and has a self draining seat surface for improved hygiene.
- All external corners are rounded with a smooth radius.
- Can be fitted with flush valve or cistern operation (subject to notes over page).



Rating achieved with
Sanitron Dual Flush
Electronic Valve

ASSDA
ACCREDITED

W
The WaterMark
Lic No WMIKA00591
AS 1172.2
Standards Australia

Due to continuous product research and development, the information contained herein is subject to change without notification.

Stainless Toilet Pan - Wall Faced

Specifications:

Construction:

Standard Specification

Toilet bowl – Highly polished 304 stainless steel
Toilet Seat - 1.6mm 304 stainless steel, No 4 finish
Body & Pan shroud - 1.6mm stainless steel, No 4

Optional Heavy Duty Specification

Toilet bowl – Highly polished 304 stainless steel
Toilet Seat - 3.0mm 304 stainless steel, No 4 finish
Body and Pan shroud - 2.0mm stainless steel, No 4
Electronic Flush Watermarked and WELS approved
4.5 litre full flush / 3 litre half flush.
20mm mains connection for flush valve.

Flushing:

*** Flush valve installation should have water pressure regulated between 250kpa and 500kpa and have a flow rate between 1.2 and 1.5 litres per second at the valve face***

*** Cistern Installation should be minimum 1150mm to top of cistern ***

Pan Inlet

60mm i.d. stainless steel inlet.

Connection:

Supplied with key-seal connector.

Pan Outlet

P or S trap configuration.

Connection:

95mm o.d. diameter stainless steel spigot with rubber coupling included to suit 100mm PVC or copper sewer pipe.

Unit Fixing:

The unit is designed to be fixed to both the floor and the rear wall.

Models:

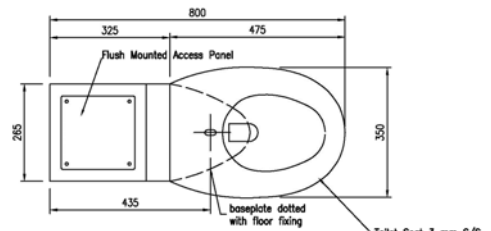
SPPL TP.WF.x

Code Breakdown:

| | |
|-------|--------------------------------|
| SPPL | Standard Product Plumbing |
| TP.WF | Toilet Pan - Wall Faced |
| x | Blank - Standard specification |
| | HD - Heavy Duty specification |
| | RA - Rear Access only |
| | TA - Top Access panel |
| | D - Disabled height |

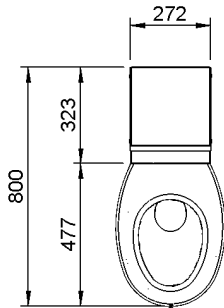
Examples:

SPPL.TP.WF
SPPL.TP.WF.D
SPPL.TP.WF.HD
SPPL.TP.WF.HD.D
SPPL.TP.WF.RA
SPPL.TP.WF.RA.D
SPPL.TP.WF.HD.RA

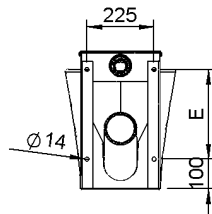


Plan View

Heavy Duty with Top Access option SPPL.TP.WF.HD.TA



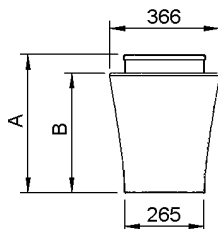
PLAN VIEW



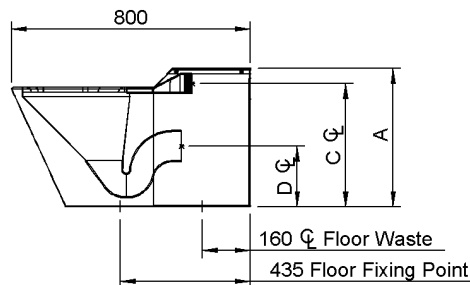
REAR VIEW

| Model No. | Dim A | Dim B | Dim C | Dim D | Dim E |
|-----------|-------|-------|-------|-------|-------|
| TPWF | 462 | 400 | 412 | 202 | 300 |
| TPWFD | 522 | 460 | 472 | 262 | 360 |

Note: Rear Access units are designed for use with a service duct. The unit has overall length of 600mm. The P trap and flush pipe are accessed through the service duct.



FRONT VIEW



END VIEW

Standard Access model SPPL.TP.WF & SPPL.TP.WD.D

Due to continuous product research and development, the information contained herein is subject to change without notification.