



## Toilet and Basin Combination – Round

Toilet Pan and Basin combination unit for high security prisons and detention centres.

Fully welded seamless stainless steel construction for superior strength and hygiene.

The toilet seat is hydraulically formed to create a comfortable contoured and self draining profile.

Rear access only option (pictured) is preferred for high security prisons.



### Models:

### SPPL TP.CR2.x.yy.zz

Code Breakdown;

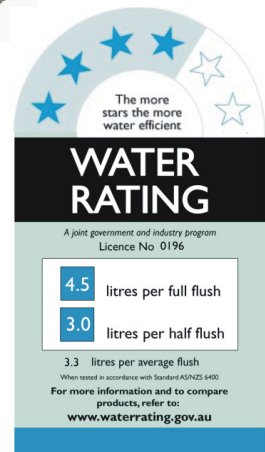
SPPL	Standard Product Plumbing
TP.CR2	Toilet Pan Combination Round
x	R - Right Hand Pan L - Left hand Pan S - Straight Pan
yy	VS - Vacuum sewerage ED - Electronic Dual Flush
zz	Blank - Standard specification HD - Heavy duty specification FA - Front access panel T - Toilet roll holder

Examples;

SPPL.TP.CR2.R.VS.HD.T  
SPPL.TP.CR2.L.VS.HD.T  
SPPL.TP.CR2.S.VS.HD.T  
SPPL.TP.CR2.R.ED  
SPPL.TP.CR2.L.ED  
SPPL.TP.CR2.S.ED  
SPPL.TP.CR2.R.ED.HD  
SPPL.TP.CR2.L.ED.HD  
SPPL.TP.CR2.S.ED.HD  
SPPL.TP.CR2.R.ED.FA  
SPPL.TP.CR2.L.ED.FA  
SPPL.TP.CR2.S.ED.FA



Optional Plastic Seat & Cover and Optional Toilet roll holder can be added by request.



Rating achieved with Dual Flush Electronic Valve for gravity sewerage configuration.

### Features and Benefits:

- Concealed plumbing & fixings for vandal resistance.
- Acoustic suppressant material between bowl and shroud minimise noise.
- 1.6mm (Std) or 2.0mm (HD) stainless steel shrouds for superior strength.
- Optional heavy duty (HD) 3mm toilet seat and 2mm body and basin deck.
- Toilet Pan Seat has an anti-contraband flushing rim for effective cell inspection.
- Smooth profiled seat for user comfort, improved hygiene and safety.
  - Optional plastic toilet seat and cover can be added as requested.
- All external corners are rounded with a smooth radius for improved safety.
- The Basin has an integrated soap holder and cell-safe security drain.
- Electronic dual flush (for gravity sewerage) provides maximum serviceability.
- Electronic Piezo buttons can easily be interfaced to water management control systems.
- Water conserving security bubbler controls water flow for drinking and hand washing
- Low profile, domed Bubbler provides improved anti-hang safety.
- Optional Front Access Panel is available for Police Stations with no rear service access duct.



Due to continuous product research and development, the information contained herein is subject to change without notification.



# Toilet and Basin Combination – Round

Electronic Dual Flush  
Electronic Basin Operation

Specifications:  
Construction:

**Standard Specification**

Toilet Seat - 1.6mm 304 stainless steel, No 4 finish  
Body & Pan shroud - 1.6mm stainless steel, No 4

**Optional Heavy Duty Specification**

Toilet Seat - 3.0mm 304 stainless steel, No 4 finish  
Body and Pan shroud - 2.0mm stainless steel, No 4  
Watermarked and WELS approved

Flushing:

Electronic Flush Watermarked and WELS approved  
20mm mains connection for flush valve.

The flush valve is pre-plumbed and secured with a bracket for ease of connection and service.

\*\*\* Flush valve installation should have water pressure regulated between 250kpa and 500kpa and have a flow rate between 1.2 and 1.5 litres per second at the valve face\*\*\*

Pan Inlet

60mm i.d. stainless steel inlet.

Connection:

Supplied with key-seal connector.

Pan Outlet

For Vacuum: 52mm o.d. stainless steel spigot.

Connection:

For Gravity: P or S trap configuration.

95mm o.d. diameter stainless steel spigot with rubber coupling included to suit 100mm PVC or copper sewer pipe.

Basin:

15mm mains connection. The basin valve is pre-plumbed and secured with a bracket for ease of connection and service.

Basin Outlet:

40mm threaded basin connection to suit PVC S or P trap.

Bubbler:

Solid stainless steel anti-hang bubbler can be mounted in deck or splashback.

Toilet Roll

Holder:

Optional cylindrical recess for holding Toilet roll can be positioned in the combi shroud.

Unit Fixing:

The unit is designed to be fixed to both the floor and the rear wall.

**Models:**

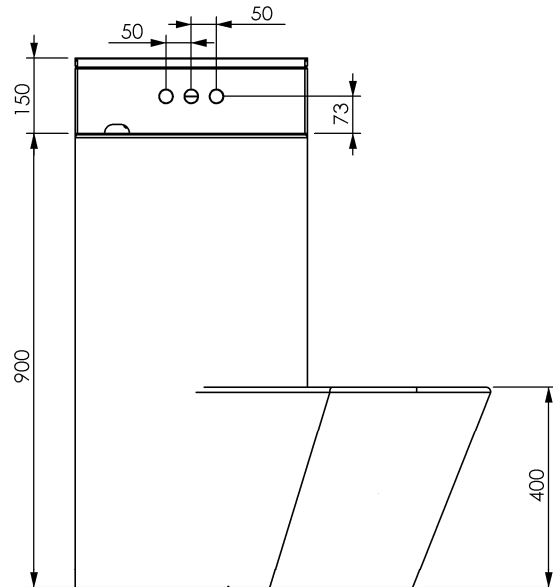
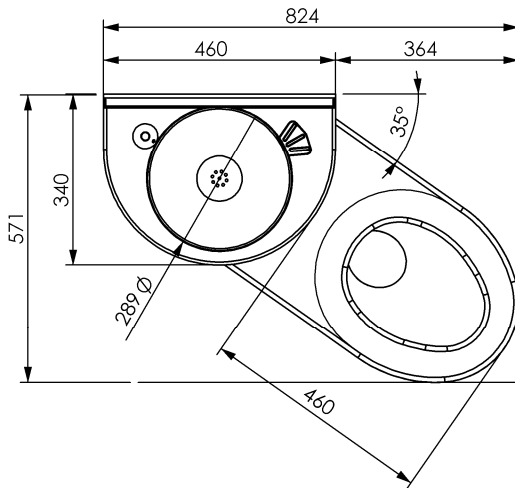
**SPPL TP.CR2.x.yy.zz**

Code Breakdown;

SPPL	Standard Product Plumbing
TP.CR2	Toilet Pan Combination Round
x	R - Right Hand Pan L - Left hand Pan S - Straight Pan
yy	VS - Vacuum sewerage ED - Electronic Dual Flush
zz	Blank - Standard specification HD - Heavy duty specification FA - Front access panel T - Toilet roll holder

Examples;

SPPL.TP.CR2.R.VS.HD.T  
SPPL.TP.CR2.L.VS.HD.T  
SPPL.TP.CR2.S.VS.HD.T  
SPPL.TP.CR2.R.ED  
SPPL.TP.CR2.L.ED  
SPPL.TP.CR2.S.ED  
SPPL.TP.CR2.R.ED.HD  
SPPL.TP.CR2.L.ED.HD  
SPPL.TP.CR2.S.ED.HD  
SPPL.TP.CR2.R.ED.FA  
SPPL.TP.CR2.L.ED.FA  
SPPL.TP.CR2.S.ED.FA



Toilet pan can be swung through any angle for left, right or straight cell configurations.

Due to continuous product research and development, the information contained herein is subject to change without notification.