

## Baby Bath Drop In

**Models:**

SPPL BB DI

Baby Bath  
to drop into bench

Designed for safe hygienic bathing of babies and infants in hospitals, childcare centers, Shopping centres, caravan parks & any public facilities.



**Features and Benefits;**

No sharp edges. All edges are rolled under to remove risk of injury to installers, users and cleaners.

Designed with 40mm waste for latest Australian safety standards. This reduces vortex formation and unwanted noise.

304 Stainless Steel with no.4 brushed finish provides an easy clean look that will provide many years of trouble free service.

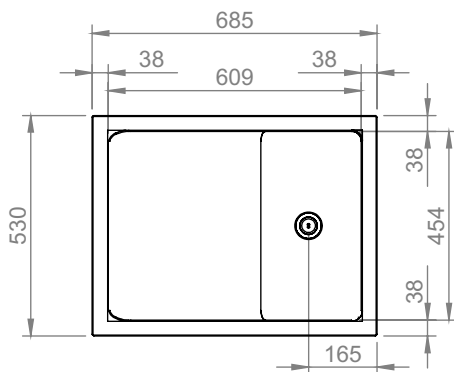
## Baby Bath Bench Inset

### Specifications

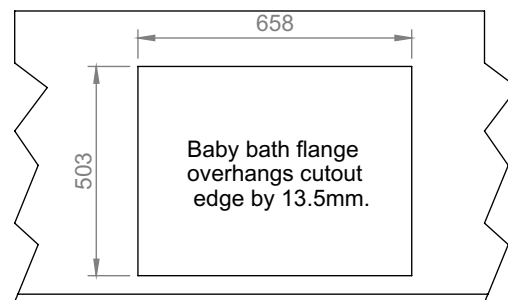
<b>Construction:</b>	Fully welded seamless construction, polished to No 4 brushed finish. 1.2mm stainless steel 304 grade. All internal corners are 25 mm radius for added hygiene.
<b>Waste Connection:</b>	DN 40mm.
<b>Unit Fixing:</b>	The unit is supplied with bench mounting fixing clips and a 40 mm PVC waste .

### Models:

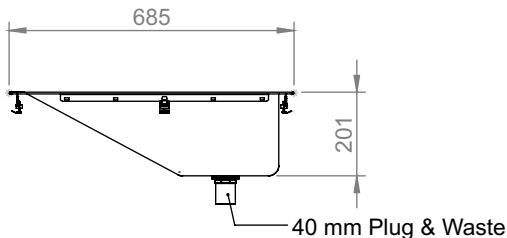
<b>BB DI</b>	<b>Baby Bath</b> to drop into bench
--------------	--



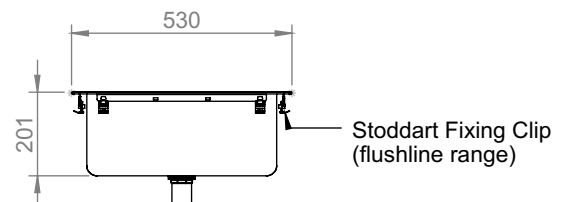
PLAN VIEW



BENCTOP CUTOUT SIZE



FRONT VIEW



END VIEW

Due to continual product research and development, the information contained herein is subject to change without notification.