

Toilet Pan

Rear Access, High Security

The Wall Faced, Type 3 Toilet Pan from Stoddart Manufacturing has the most water efficient dual flush rating (certified by Wels for 4.5L full flush and 3L half flush) It is also available with for vacuum systems and requires just 1.8 litres of water per vacuum flush.

This 550 long unit is a reduced length variation of Stoddart's highly reputed product for use in high security prisons, detention centres, police stations and public amenities where room space is limited and plumbing is through a wall to a service duct.

This unit does not have access panels inside the cell for added security. Fittings are accessed through the rear of the unit. The fully welded stainless steel construction provides extreme vandal resistance, with superior strength, superior hygiene and long service life.

Models:

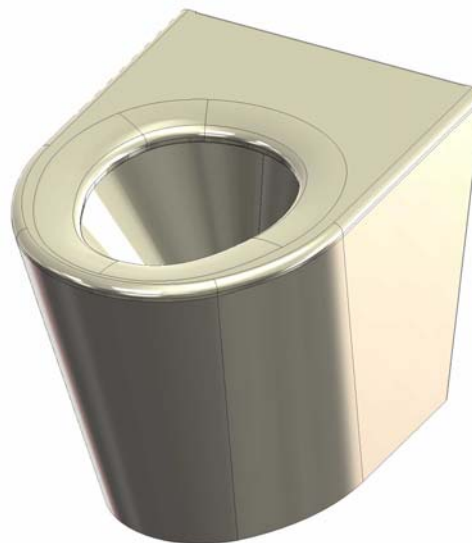
SPPL.TP.WF.3.S.S.RA.550

Code explanation:

SPPL	= Standard Product Plumbing
TP	= Toilet Pan
WF	= Wall Faced
3	= Type 3
S	= Standard height
S	S = Standard V = Vacuum
RA	= Rear access
550	= 550mm length
192626	= Cleveland Youth Detention Centre variation

e.g.: for specification and ordering vacuum toilet

SPPL.TP.WF.3.S.V.RA.550



Features and Benefits:

- Strong 2mm thick stainless steel shroud and formed seat provide superior strength.
- Plumbing and fixing points are concealed for security and vandal resistance.
- Access to plumbing is via rear access service ducts.
- Toilet pan seat has an anti-contraband flushing rim for effective cell inspection.
- Seat has smooth hydraulically formed radius to both outer and inner edges for safety and comfort and has a self draining seat surface for improved hygiene.
- All external corners are rounded with a smooth radius for user safety.
- These toilets can be installed with either a flush valve or cistern (order separately).



Due to continuous product research and development, the information contained herein is subject to change without notification.



Toilet Pan

CYDC

Specifications:

- Construction:** Toilet bowl – 2mm 304 stainless steel.
Body and shroud – 2mm 304 stainless steel no 4 finish.
- Flushing:** Gravity: WELS approved 4.5L full flush/3L half flush.
Vacuum: 1.8 litre per flush.
- Water Connection:** Gravity: 60mm ID stainless steel inlet for inserting 40mm supply with key seal. 25 mm mains connection for flush valve. Installed valve should have water pressure regulated between 250kPa and 500kPa and have a flow rate between 1.2 and 1.5 Litres/s at the valve face. RAG should be mounted >450mm above seat.
Vacuum: 15mm BSP
- Waste Connection:** Gravity: Stainless steel P trap. 95mm OD stainless steel spigot with rubber coupling included.
Vacuum: 50mm waste connection
- Unit fixing:** The unit is designed to be fixed through the rear wall with 4 bolts. A Z-clip is supplied to secure the front of the base to the floor.

Models:

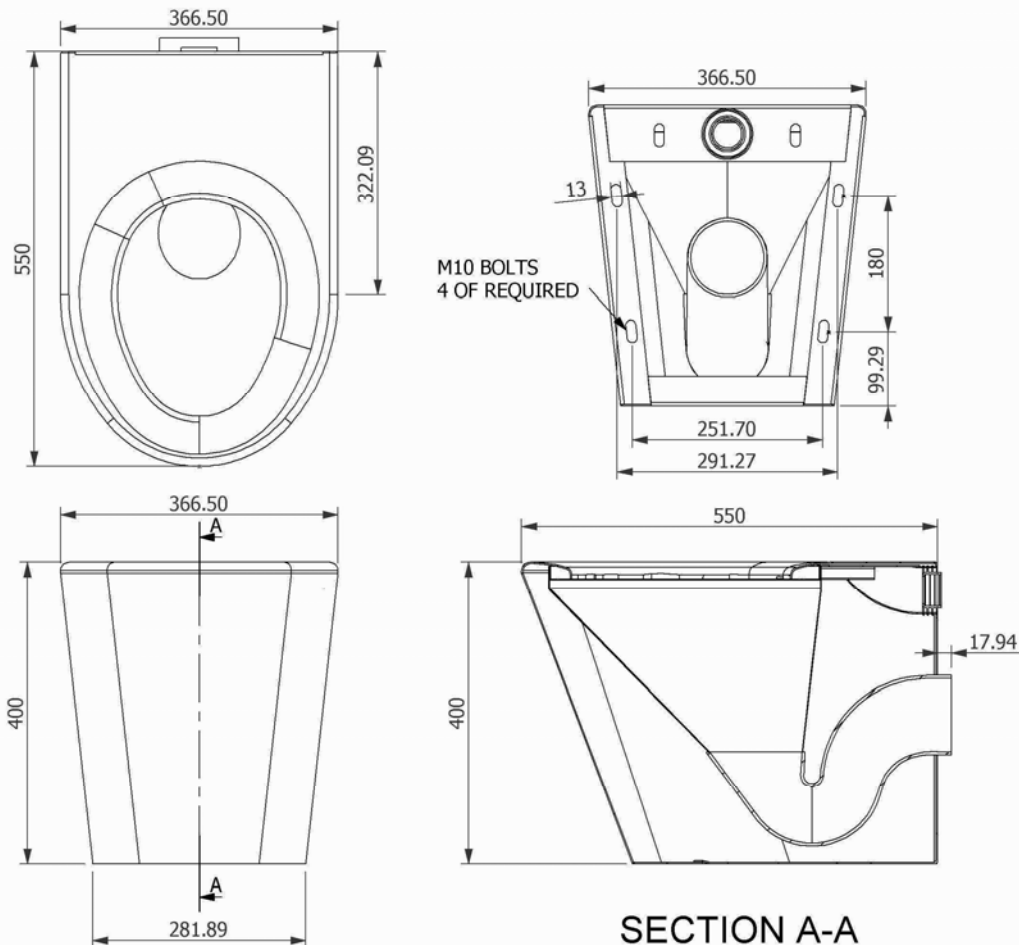
SPPL.TP.WF.3.S.S.RA.550.192626

Code explanation:

- SPPL = Standard Product Plumbing
- TP = Toilet Pan
- WF = Wall Faced
- 3 = Type 3
- S = Standard height
- S = Standard spec
- RA = Rear access
- 550 = 550mm length
- 192626 = Cleveland Youth Detention Centre variation

e.g.: for specification and ordering

SPPL.TP.WF.3.S.S.RA.550.192626



Model No.	Length (mm)	Width (mm)	Height (mm)
SPPL.TP.WF.3.S.S.RA.550.VAR	550	366.5	400

Due to continuous product research and development, the information contained herein is subject to change without notification.