



## Slop Hopper

Wall Faced, Type 3

Stoddart Manufacturing's Slop hopper is a safe and robust stainless steel toilet pan with a strong slop hopper grate for supporting bedpans, buckets and other sanitary devices.

Ideal for use in nursing homes, hospitals, medical centres and child care centres.

Slop hopper grate is strong and wide to provide maximum stability for positioning of inverted pans and buckets.

Toilet pan used is Stoddart's highly regarded and water efficient Security Wall Faced Type 3 Toilet Pan made of heavy gauge stainless steel for vandal resistance.

### Models:

#### SPPL.TP.SH.WF.3

Code explanation:

SPPL = Standard Product Plumbing

TP = Toilet Pan

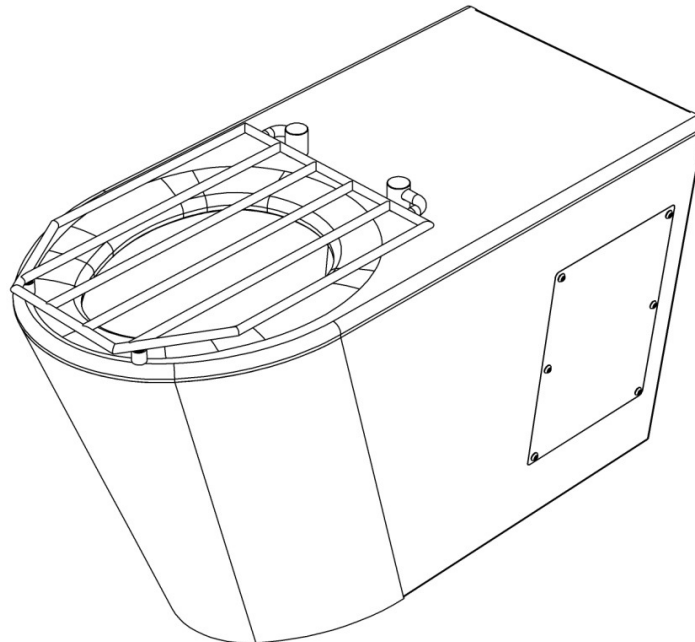
SH = Slop Hopper

WF = Wall Faced

3 = Type 3

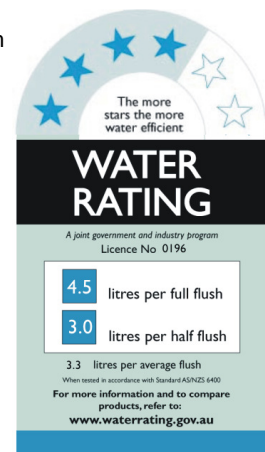
e.g.: for specification and ordering

SPPL.TP.SH.WF.3



### Features and Benefits:

- Hinged grate constructed from 10mm diameter 304 grade stainless steel rod for superior strength and hygiene.
- Five welded bars for stable support of bucket, bedpan or other sanitary device.
- 2mm thick stainless steel shroud for and formed seat superior hygiene and strength.
- Plumbing and fixing points are concealed for security and vandal resistance.
- Access to plumbing through side access panels.
- Toilet pan seat has an anti-contraband flushing rim for effective cell inspection.
- Smooth profiled seat has radius to both outer and inner edges for safety and has a self draining seat surface for improved hygiene.
- External corners are rounded with a smooth radius.
- These toilets can be installed with either a flush valve or cistern (order separately).



Rating achieved with  
Sanitron Dual Flush  
Electronic Valve



Due to continuous product research and development, the information contained herein is subject to change without notification.



# Slop Hopper

Wall Faced, Type 3

**Specifications:**

**Construction:** Standard.  
Toilet bowl – 1.2mm 304 stainless steel.  
Body and shroud – 2mm 304 stainless steel no 4 finish.  
Grate – 10mm diameter stainless steel rod.

**Water Connection:** 60mm ID stainless steel inlet. 40mm inlet connection.

**Waste Connection:** P trap standard, optional P-S adaptor can be ordered separately.

95mm OD stainless steel spigot with rubber coupling included to suit 100mm PVC or copper sewer pipe.

**Unit fixing:** The unit is designed to be fixed to the rear wall with 4 bolts. A Z-clip is supplied to secure the front of the base to the floor.

**Models:**

**SPPL.TP.SH.WF.3**

Code explanation:

SPPL = Standard Product Plumbing

TP = Toilet Pan

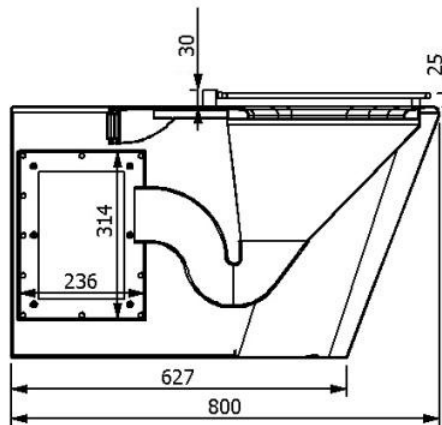
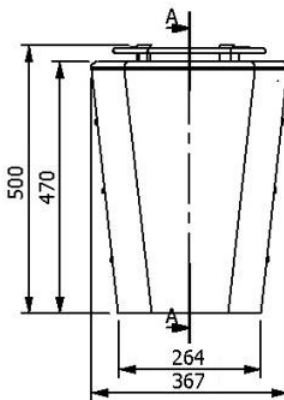
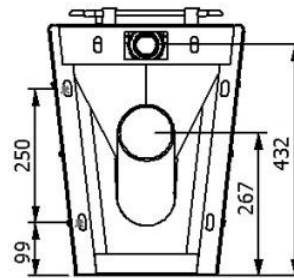
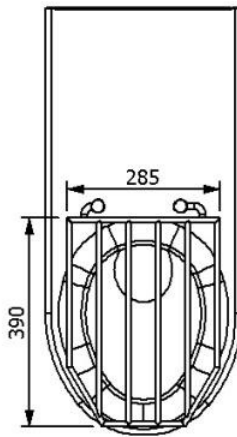
SH = Slop Hopper

WF = Wall Faced

3 = Type 3

e.g.: for specification and ordering

SPPL.TP.SH.WF.3



Model No.	Length (mm)	Width (mm)	Height (mm)
SPPL.TP.SH.WF.3	367	800	500

Due to continuous product research and development, the information contained herein is subject to change without notification.