



Grab Rails

Grab Rails and Disabled Grab Rails from Stoddart Manufacturing provide safety and convenience for public amenity users.

Each model complies with AS.1428.1-1998. The strong, vandal resistant design also makes them an ideal choice for using as general purpose all mount hand rails in many public use applications.

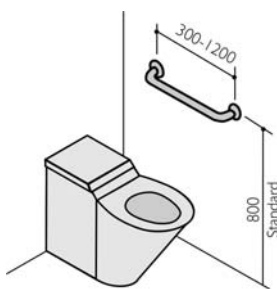
Grab rails are an essential component of a well designed modern amenity. Available in a range of standard layouts or as a custom built unit.

Models:

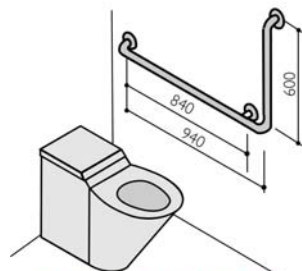
SPPL.GR.XX.YYYY.ZZZZ

Code explanation:

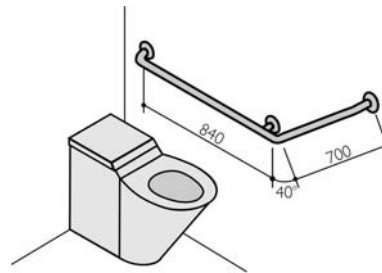
- SPPL = Standard Product Plumbing
- GR = Grab Rail
- XX 04 = 90° bend
06 = 40° bend
AM45 = Ambulant Set 2 off 450x450
- L/R/B Left or Right or Both
- YYYY = Section 1 length
- ZZZZ = Section 2 length (if applicable)



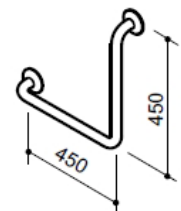
SPPL.GR.00.xxxx



SPPL.GR.05.940.600

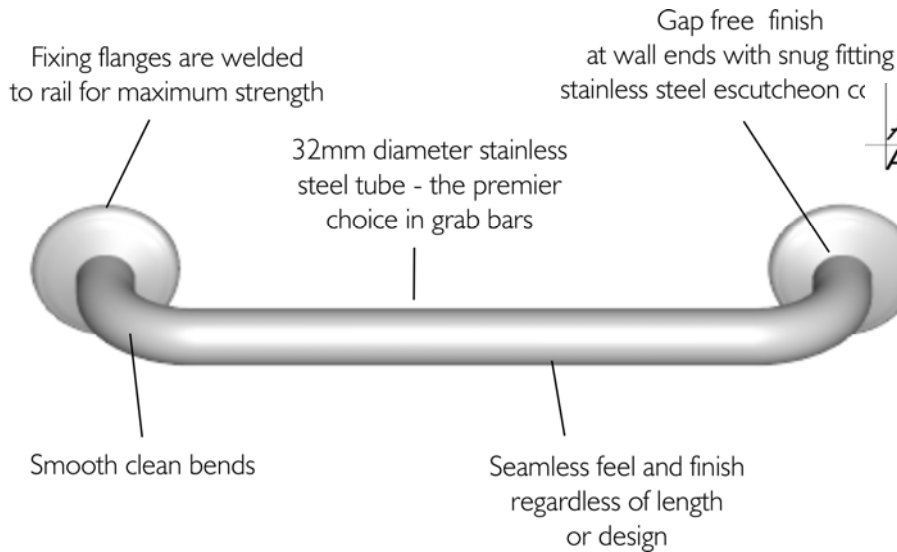


SPPL.GR.06.840.700



Set of left and right

SPPL.GR.AM45



Features and Benefits:

- Stainless steel Grab Rails provide good hygiene and long service life.
- Models comply with AS.1428-1 and meets local government requirements.
- Substantial 75mm diameter fixing flanges provide strength and ease of installation.
- Attractive stainless steel cover plates conceal flanges and mounting screws.

Due to continuous product research and development, the information contained herein is subject to change without notification.



Grab Rails

Specifications:

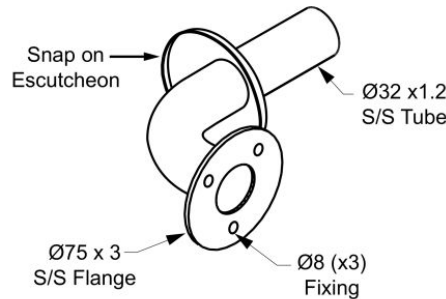
Construction: 32mm diameter, seamless no 4 satin finish stainless steel tube.
Unit fixing: 71mm stand off from wall to centre of rail.

Models:

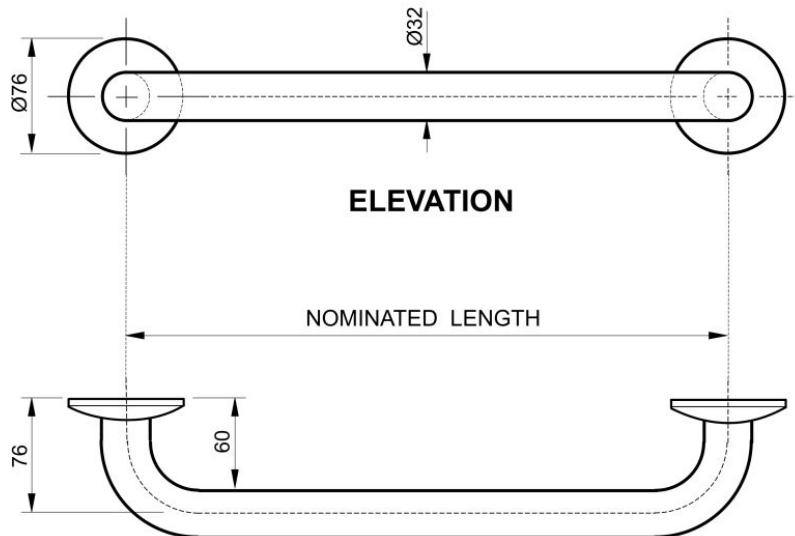
SPPL.GR.XX.YYYY.ZZZZ

Code explanation:

- SPPL = Standard Product Plumbing
 - GR = Grab Rail
 - XX 05= 90° bend
06= 40° bend
AM45= Ambulant set 2 off 450x450
 - L/R/B Left or Right or Both
 - YYYY = Section 1 length
 - ZZZZ = Section 2 length
- e.g.: for specification and ordering
SPPL.BB.DI



DETAIL



ELEVATION

PLAN

Model No.	Length (mm)	Width (mm)	Height (mm)
SPPL.GR.00.XXXX	XXXX	92	76
SPPL.GR.05.940.600	940	92	600
SPPL.GR.06.840.700	1476	92	450
SPPL.GR. AM45	450	92	450

Due to continuous product research and development, the information contained herein is subject to change without notification.